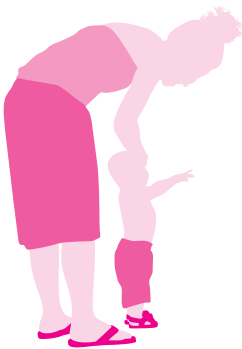




Safety Advice for Carers of Babies and Toddlers

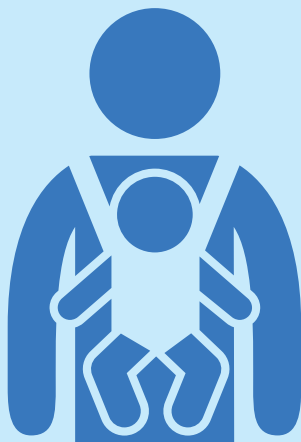


The CSCB is the local statutory multi-agency body which brings together those who work to safeguard and promote the welfare of children and young people in Croydon. Our mission statement is:

“ **Croydon Safeguarding Children Board aims to safeguard Children by promoting safe practice by all involved and early intervention, as far as is possible, with children/ young people and their parents and carers.** ”

1

- **T**ight
- **I**n view at all times
- **C**lose enough to kiss
- **K**eep chin off the chest
- **S**upported back



2

- Keep small items out of reach
- Cut food into small bite-sized pieces
- Never leave your child unattended with food or bottles
- Nappy sacks – never store in a pram or cot



3

- Blinds and curtain cords – keep secured with ties out of reach
- Never hang toys or bags with cords on your babies' cot
- Be aware of tying a dummy to your child's clothes



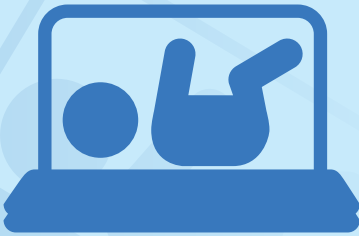
4

- 5cm (2inches) is enough water to drown in
- Be aware of scalds in baths
- Never leave a child unattended in water, even in a bath seat or floatation device
- Be aware of ponds, water features or rubbish which can accumulate water in your child's surroundings



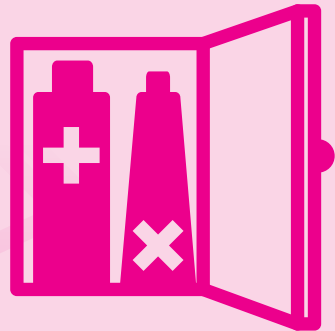
5

- If they are off the ground, strap them in! High chairs, swinging cradles/toys etc
- Bouncing cradles, toddler seats, supporting cushions are for floor use only.
- Use stair gates
- Do not leave your child unattended, especially when on higher surfaces such as beds, changing tables and sofa's
- Move furniture from under windows, which may encourage a child to climb
- Fit window catches



6

- Keep all non food items (toxic items) locked away
- Keep medicines out of reach
- Use cupboard catches



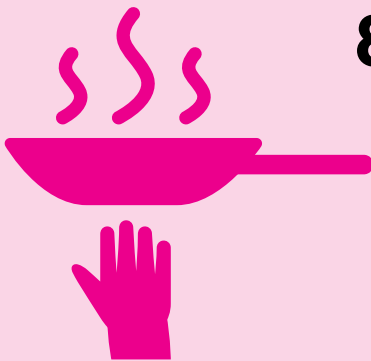
7

- Be buggy safe – be strapped in
- Use reins or wrist straps near roads
- Car seats, should be approved and properly fitted, both into the car and onto the child



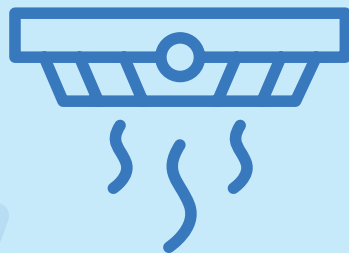
8

- Be aware of the risk of burns and scalds when cooking
- Use cupboard catches



9

- Fit a smoke alarm and a carbon monoxide alarm
- Use socket covers



This advice is provided by the CSCB. It is not an exhaustive list.

More information can be found on our website

www.croydonlcsb.org.uk